



Wallaceburg Minor Hockey Association Emergency Action Plan

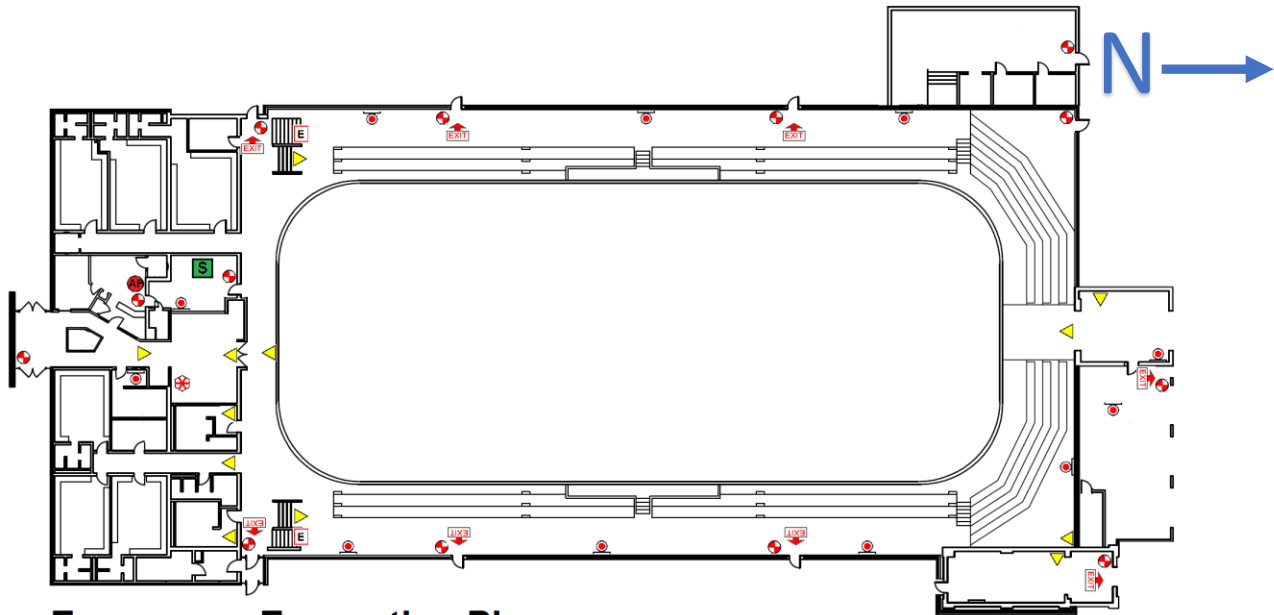


The coach, manager and safety person should initiate a meeting at the beginning of the season to ensure they have the volunteers required for their Emergency Action Plan.

EMERGENCY PHONE

911

Wallaceburg Memorial Arena
600 Wall Street
Wallaceburg, ON
N8A 3H9
(519) 627-1607



Emergency Evacuation Plan
Wallaceburg Memorial Arena
First Floor

Legend:	
	Fire Extinguisher
	First Aid Station
	Fire Alarm Pull Box
	Emergency Exit
	Emergency Light
	AED
	Suppression System
	Annunciator Panel
	Fire Hydrant
	Exit Sign



Wallaceburg Minor Hockey Association Emergency Action Plan

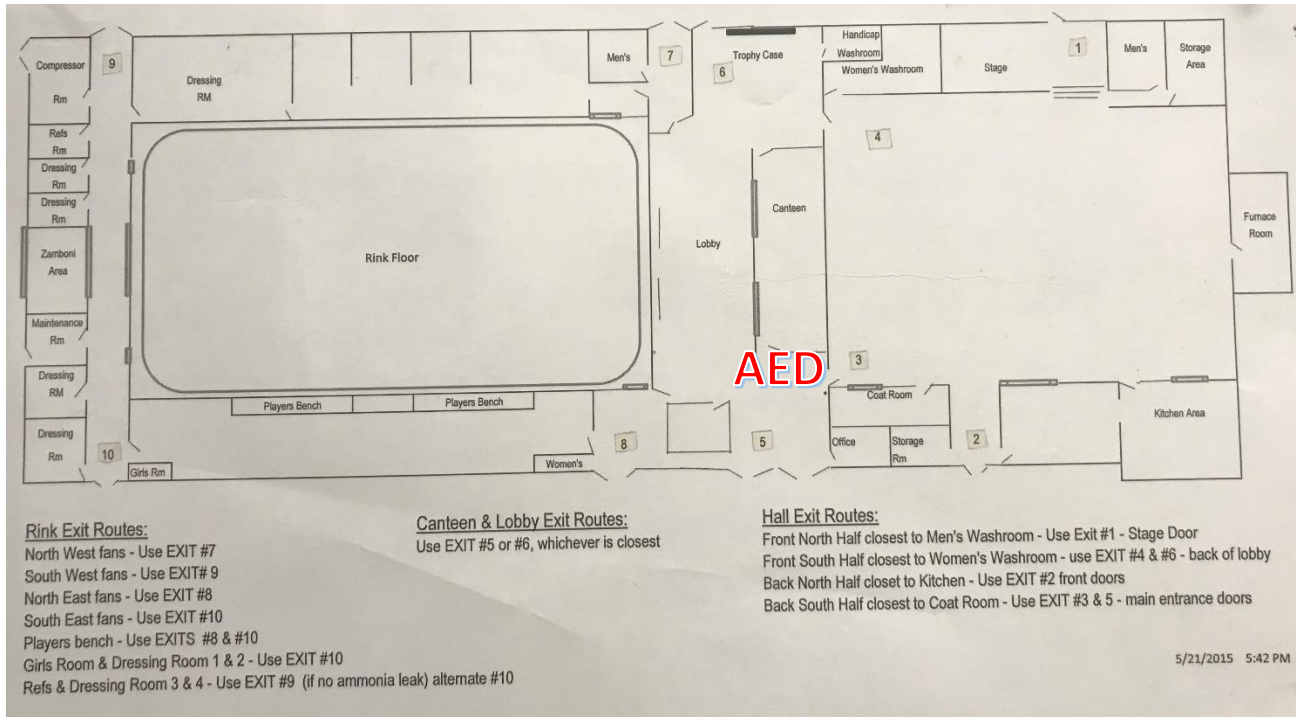


The coach, manager and safety person should initiate a meeting at the beginning of the season to ensure they have the volunteers required for their Emergency Action Plan.

EMERGENCY PHONE

911

**Walpole Island Sports Complex
770 Tecumseh Rd
Walpole Island
N8A 4K9**





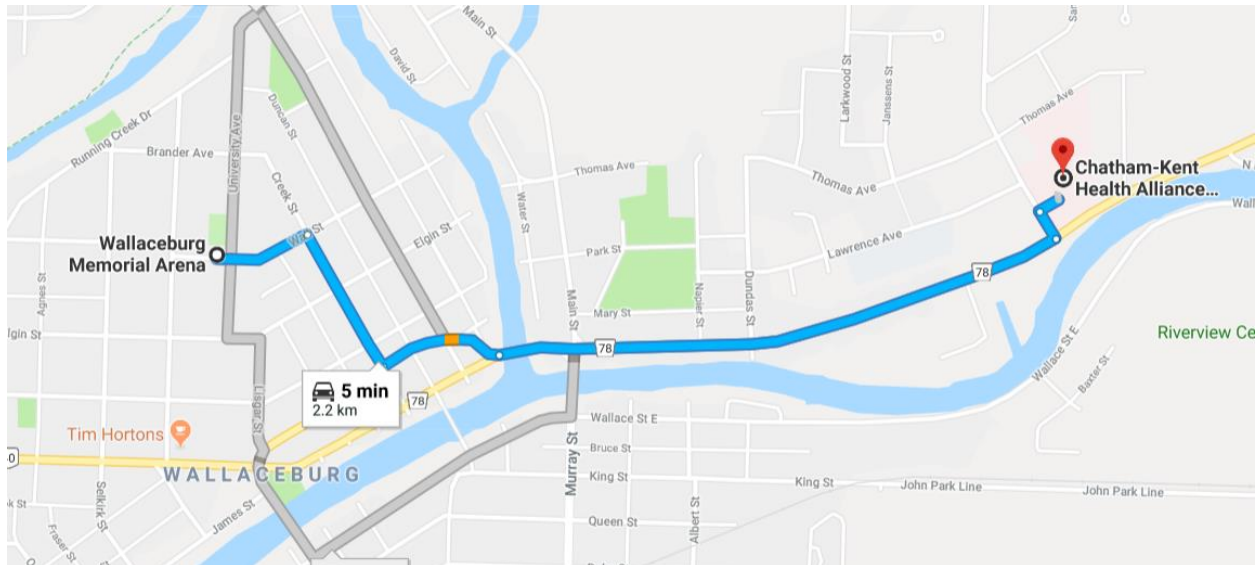
Wallaceburg Minor Hockey Association Emergency Action Plan



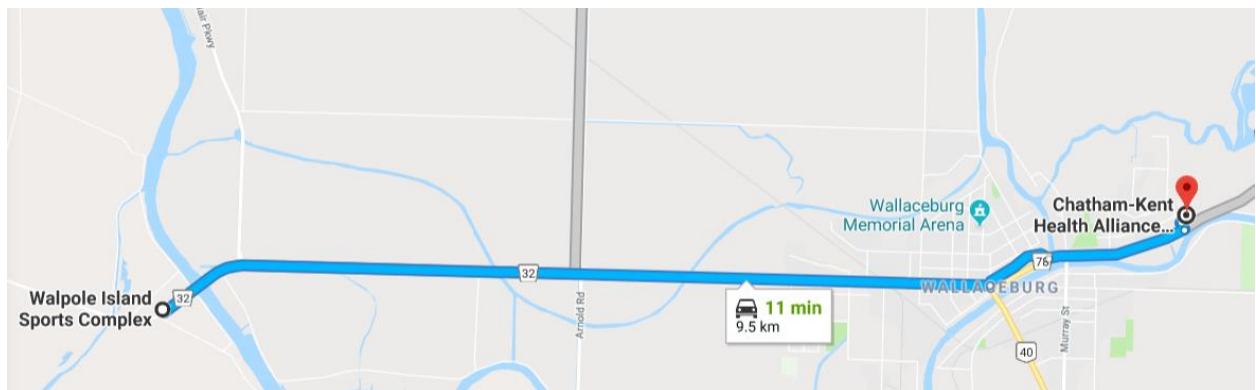
Hospital:

Chatham-Kent Health Alliance; Sydenham Campus
325 Margaret Ave, Wallaceburg, ON N8A 2A7
(519) 352-6400

Directions from Wallaceburg Memorial Arena



Directions from Walpole Arena





SAFETY REQUIRES TEAMWORK AN EMERGENCY ACTION PLAN FOR HOCKEY



The coach, manager and safety person should initiate a meeting at the beginning of the season to ensure they have the volunteers required for their Emergency Action Plan.

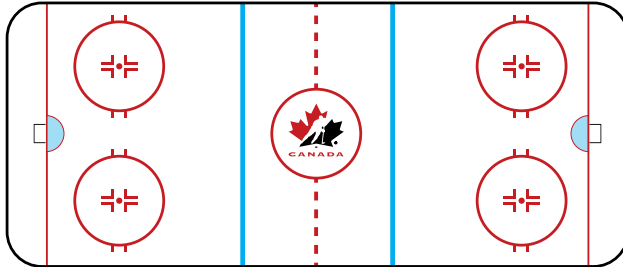
Equipment Locations

Arena Information

Please locate and identify area on map:

Legend

Phone P
Exits E
First aid... FA
AED. AED



Arena/Facility Name: _____

Address: _____

Telephone Number: _____

Emergency Telephone Numbers

Emergency: _____

Ambulance: _____

Fire Dept: _____

Hospital: _____

Police: _____

General: _____

Roles

Safety Person / Charge Person

- Initially takes control of the situation.
- Instructs player to lay still and bystanders, such as other players, not to move player.
- Do not move the athlete.
- Assess injury status of player, decide if an ambulance/medical care is required.
- If the injury is serious and warrants immediate attention that you are not qualified to provide, make your pre-determined signal to your call person, control person and your pre-determined first aid/medical person.

Call Person

- Makes call when emergency assistance required (tests their cell phone in the facility to ensure it will work).
- Know location of alternate phones in the facility being played in. Have change or a phone card if necessary.
- Ideally at all games and practices and not involved on the bench.
- Has a list of emergency phone numbers in the area of the facility.
- Has a diagram displaying specific directions and best route to the arena facility.

Control Person

- Pre-determine the location of the AED and other emergency equipment in the facility.
- Retrieving the AED and/or first aid kit and bringing to the injured player if requested.
- Seek highly-trained medical personnel in the facility if requested by the Charge Person.
- Ensure teammates, other participants and spectators are not in the way of the charge person.
- Advise opponents, on-ice officials, arena staff and parents of the steps being taken.
- Ensure the quickest and best route for the ambulance crew to the ice surface is clear and accessible.
- Meet the ambulance on its arrival and direct EMS to the injured player.

IMPORTANT REMINDERS

The game official continues to assume the role of being in charge of the overall environment.

It is important for officials to note that if the safety person makes the signal for assistance that there may be a number of pre-determined people who will respond and will require access to the ice.

Once the ambulance is called, the officials should send both teams to their dressing rooms.

See flow chart on reverse



Emergency Action Plan Flow Chart

